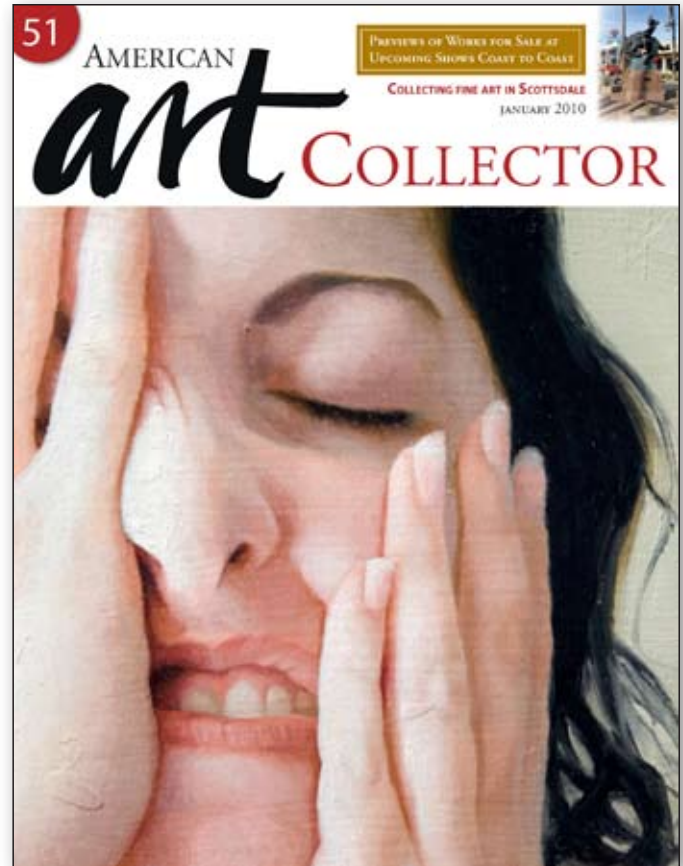


As seen in the  
January 2010 issue of

 AMERICAN  
*art* COLLECTOR



## UPCOMING SHOW

Up to 10 works on show  
January 19-February 2, 2010  
Rive Gauche Art Gallery  
7173 E. Main Street  
Scottsdale, AZ 85251  
(480) 947-6372

• SHOW LOCATION SCOTTSDALE, AZ



# FRANK BALAAM

## Autumn foliage

Frank Balaam's treescapes explore the evolution of form and the movement of light. In his new large-scale paintings, a continuation of his *Light Through the Trees* series, the Arizona artist approaches the traditional landscape forests with the intent of capturing the primeval energy of life and growth, which emanates as much from the air surrounding the trees as from the trees themselves.

"At first sight, I want my paintings to have a universal appeal, yet it is very important for me that the works have a significant mystery in their depths, which is discovered and released over many years of viewing," says Balaam.

Unlike a traditional landscape painting that commences in the distance and progresses through painted layers to the foreground, in this series, Balaam reverses this approach by beginning with the foreground and passing slowly through the scene, finishing with the final brushstrokes of distant pure light bursting onto the surface of the canvas. By reversing the order of painting, the light appears to have substance instead of merely being a scenic backdrop, and because the last brushstrokes of the painting are thick dabs of color representing the distant sky, the light has a way of distorting the edges of leaves and branches as if it has physically muscled its way onto the foreground, scuffing

off color as it passes through the dense growth of the forest.

"It also results in a painting with no two colors painted over each other; consequently all the brushstrokes are laid upon a white canvas with the bright white ground exploiting the translucence of oil paints to create an effect similar to that of stained glass," explains Balaam.

Much of the new work was inspired by a recent painting trip to Michigan's Upper Peninsula where Balaam became fascinated by the glimpse of hidden lakes through the trees and the amazing autumnal color changes prominently seen in the brilliant red Sumacs.



RED SUMAC II, OIL ON CANVAS, 4 X 4'



MINERAL LAKE, OIL ON CANVAS, 54 X 32'



GLIMPSE OF DEER ISLAND, OIL ON CANVAS, 4 X 4'

These paintings of vivid colors and abstracted organic shapes take the viewer on visual adventures where their eyes are excited by discovery of elements such as fine tendrils of brilliant red saplings weaving through rich greens and turquoise undergrowth.

“The subject of the forest is in many ways a vehicle for a philosophy. My work illustrates the concept of rationalized chaos in which realistic existence emerges out of abstracted randomness due to natural

tendencies and patterns,” says Balaam. “I paint a sense of intense individuality that is essentially integrated into a balanced whole, mirroring a society created with connected individuals.” ●

For a direct link to the exhibiting gallery go to  [www.americanartcollector.com](http://www.americanartcollector.com)

**Price Range Indicator**  
*Our at-a-glance Price Range Indicator shows what you can expect to pay for this artist's work.*

|      | Small   | Medium  | Large   |
|------|---------|---------|---------|
| 1999 | \$500   | \$2,000 | \$3,000 |
| 2004 | \$1,200 | \$5,000 | \$6,000 |
| 2010 | \$1,500 | \$6,000 | \$9,500 |